



GAT MONTHLY MEMBERSHIP PROGRESS REPORT

Results as of: 5/31/2023

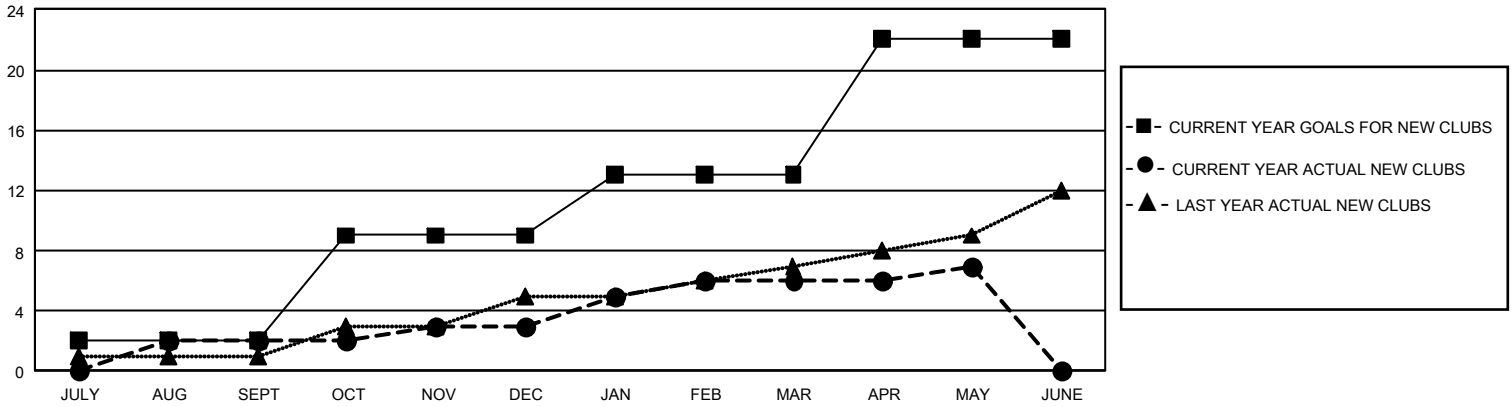
GMT Constitutional Area 1, Group F

REPORT DOES NOT INCLUDE CLUBS IN UNDISTRICTED AREAS.

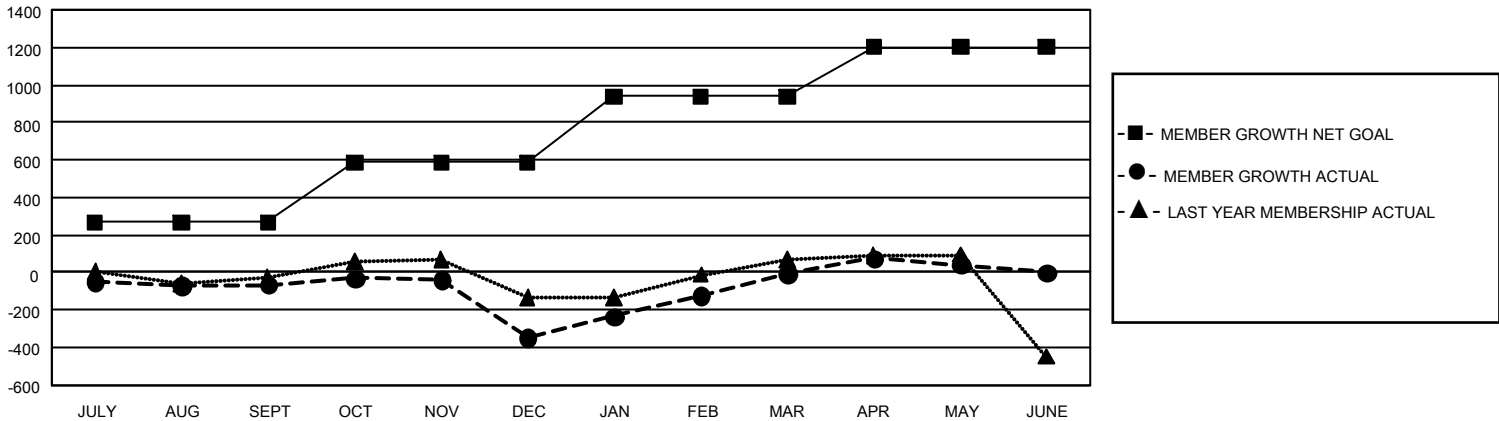
Clubs			
RESULTS FOR 2022-2023			
QUARTER	NEW CLUB GOAL	NEW CLUBS	DROPPED CLUBS
JULY/AUG/SEPT	6	2	5
OCT/NOV/DEC	21	1	14
JAN/FEB/MAR	12	3	0
APR/MAY/JUNE	27	1	0

Members			
RESULTS FOR 2022-2023			
QUARTER	MEMBER GROWTH NET GOAL	MEMBER GROWTH ACTUAL	DROPPED MEMBERS ACTUAL (including transfers)
JULY/AUG/SEPT	268	553	558
OCT/NOV/DEC	318	593	834
JAN/FEB/MAR	353	874	480
APR/MAY/JUNE	262	445	371

GOALS AND ACTUAL NEW CLUBS CUMULATIVE



GOALS AND ACTUAL MEMBERS CUMULATIVE



DROPPED CLUBS: 19 DROPPED MEMBERS DECEASED 299 CLUB CANCELLED 157 OTHER 1,788 TOTAL 2,244	490 CLUBS OF 861 ADDED 1 OR MORE NEW MEMBERS	GENDER DISTRIBUTION MALE 13,943 (60.07%) FEMALE 9,240 (39.81%) NON BINARY 0 (0.00%) PREFER NOT TO ANSWER 29 (0.12%)
	CLICK HERE FOR CUMULATIVE MEMBERSHIP DATA	TOTAL FAMILY UNIT MEMBERS 4,237 FAMILY MEMBERS PAYING HALF DUES 2,210